

TEKNIX

VERTICAL TRANSPORT SOLUTION

In collaboration with SRH aufzüge GmbH



Vilamatek



Finest German
Craftmanship



WE, TEKNIX

The world is growing, changing & is a host to ever growing number of people.

What doesn't change is the willingness of every man to look beyond, to aim high towards new goals & achievements.

VISION



At Teknix, our vision is to improve vertical flow of urban life, we aim at making vertical transportation safe, energy efficient, reliable & convenient. We believe in reducing carbon footprint to the minimal by improving technology & efficiency of our products.

WHO WE ARE

Teknix Elevators, started in the year 1985, with a simple concept of achieving excellence in the field of the vertical transportation industry, and bringing about the change in how people perceive elevators.

Today, after 37 years of existence, we are leaders in the Southwest Asian market with an installed base of 27,000 elevators & ongoing with a complete end-to-end manufacturing, installation, Modernisation and Maintenance of elevators, with operation spread across 15 countries. Our Management team brings deep expertise in the field of vertical transport technology.

38 years

Experience

27,000 +

Installed units

15

Countries

65,000 sq.ft.

Manufacturing unit

MANUFACTURING CAPABILITIES

Teknix has a world-class manufacturing facility based in the southern Indian city of Bangalore, spread over 65,000 sq. ft of space with an end-to-end manufacturing capacity of 2000 elevators annually. Our precision working machines range from world-class Fiber Laser machines to V grooving center & Servo Press brakes for ultimate finishes backed by the Quality inspection system & manufacturing process that makes us one of the best manufacturing setups in the country.

QUALITY POLICY

At Teknix, we believe that quality is everybody's responsibility. It is this mindset that has shaped both our quality policy and our relationship with the stakeholders. Our vendors are carefully evaluated - not just for the material they supply but for their commitment to quality. Incoming raw materials and parts are inspected stringently and random sample checks are carried out on intermediate products. Every final product is thoroughly tested before it reaches our customers. Certifications, we believe, are an important part of the Quality Process. So even while we uphold the demanding standards of being an ISO-9001-2008 Certified Company, we continue to add more certifications and conform to different standards, like meeting the EN 81-71 standards for vandal-resistant elevators.

And while our obsession with quality is evident in every elevator that sports our label, we know that things can always be better. Our quest for quality therefore is a never-ending one.

Teknix Villamatek is an ultra-compact platform elevator system that adopts a world-class belt drive & suspension technology and is almost 50% smaller in the space footprint compared to a standard traction elevator. It not only saves power but also reduces the construction space by 30% and greatly reduces the top floor height & pit depth required, which makes it the most suitable option for ultra-high-end penthouses & villas where alteration to existing structure is not feasible.

Villamatek is a highly flexible product with options to install the machine on any of the one sides and give a complete vision on three sides of the shaft, with options of different entry and exit on different floors.



FLEXIBILITY AT IT'S HEART



Safe and reliable



Green technology



Comfortable and quiet



Space Saving



Teknix is known for its safe & reliable elevator systems, we uphold our pride in providing the safest elevators with our highly reliable unintended car movement device, and peace of mind is complimentary.



Teknix rescue device

In case of power failure, the elevator travels to the nearest landing & the doors open for the passengers to exit.

Safety edge system



A unique safety system was developed to stop the elevator in case the occupants try to get close to the edge of the platform, the platform senses the weight of the occupant and stops the elevator from traveling further until the occupant goes back.



Anti-pinch door

In case the occupants try to manually stop the door or if there is an obstruction in between the door at the time of closing, the door returns to the open position.



Dual Disc brakes

Teknix Belt drive traction system comes equipped with dual disc brakes for ultra-smooth & safe braking.



Traction belt testing device

Teknix Villamatek comes equipped with belt breaking test device, so in case any of the internal strands of the belt are worn out & broken, the elevator would stop running & give a notification until the belt is repaired or replaced.



FEATURES



Villamatek is one of a kind elevator with no headroom & only 65mm of pit requirement.



State-of-the-art PM-Servo Motor riding System for industry-leading performance.



State-of-the-art highly reliable and efficient integrated controllers with advanced direct landing technology and self-diagnostic systems for ultimate performance and minimum downtime of the elevator.



Microcontroller built with IOT-based operating system, helping reduce repetitive breakdowns.



Rotary encoder to give real-time RPM feedback to the controller which helps in precise leveling and smooth start/stop of the elevator with enhanced safety of passengers.



SMT - Surface Mount Technology enhances reliability and Scalability.



To increase system reliability, Villamatek is designed with an Actel Class FPGA chip-based safety circuit. This type of circuit is normally used in the airplane industry for failure-proof safety activation.



Uses PWM Dead Time Compensation technology and dynamic PWM Carrier Modulation technology to reduce noise and motor energy loss.



Villamatek Elevator comes with an extremely fast integrated control system developed on Cortex M4 MCU, to give the most reliable & fastest processing speed.



Rotary SINCOS Encoder gives real-time RPM feedback to the controller which helps in precise leveling as well as smoothest start/stop of the elevator for enhanced passenger safety.



Direct Landing System - Villamatek comes with a Direct Landing system which completely expels the need for creeping speed and gives a complete S-curve ride.



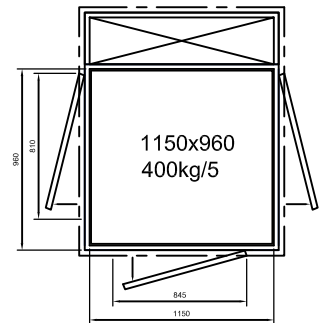
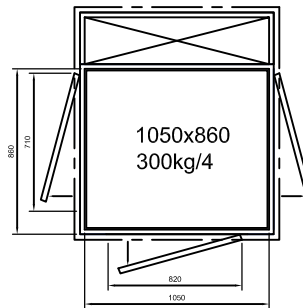
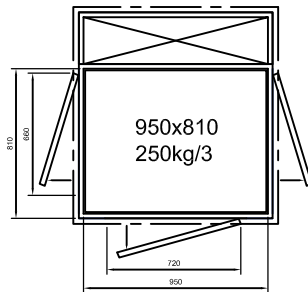
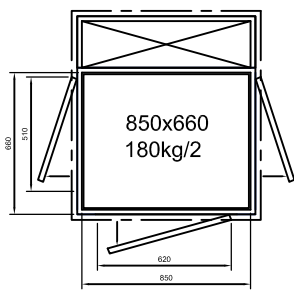
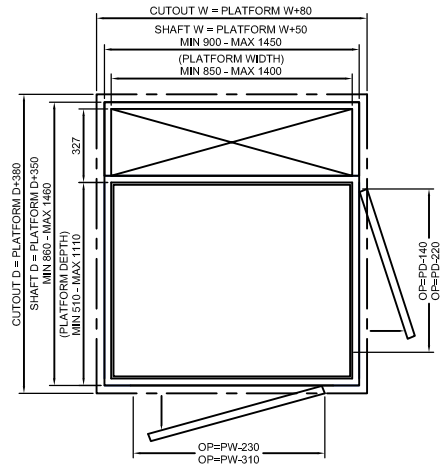
Close loop integrated system - Villamatek range of elevators are equipped with a Multi-computer based close loop integrated drive system which helps in the smoothest start/stop for extra comfort.



Minimum top height 2250mm
 Pit depth 60mm
 Min. space for villamatek elevator installation; 930x890mm

Platform width minimum 850mm - maximum 1400mm,
 The size range supports 50mm increase or decrease.

Platform depth minimum 510mm - maximum 1110mm,
 The size range supports 50mm increase or decrease.



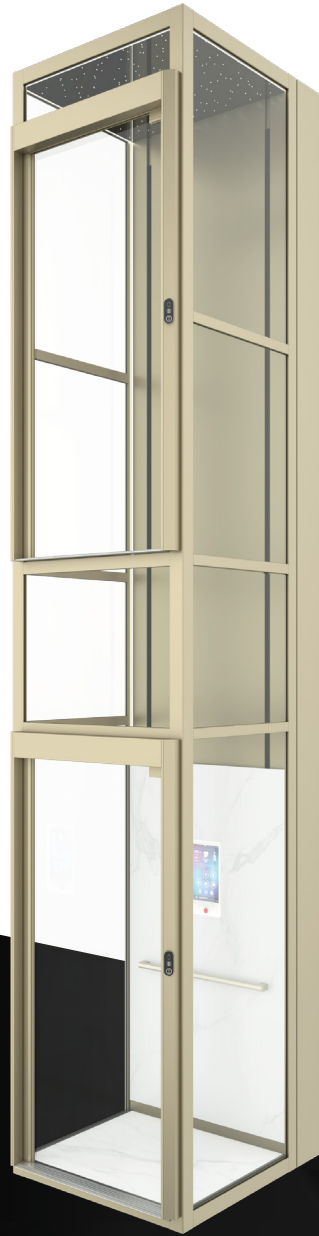
WEIGHT / PERSON	PLATFORM WIDTH	PLATFORM DEPTH	SHAFT WIDTH	SHAFT DEPTH	CUTOUT WIDTH	CUTOUT DEPTH
180kg / 2	850 mm	660 mm	900 mm	1010 mm	930 mm	1040 mm
250kg / 3	950 mm	810 mm	1000 mm	1160 mm	1030 mm	1190 mm
300kg / 4	1050 mm	860 mm	1100 mm	1210 mm	1130 mm	1240 mm
400kg / 5	1150 mm	960 mm	1200 mm	1310 mm	1230 mm	1340 mm



HOISTWAY FRAME COLOR SELECTION



Deep Gray



Champagne Gold



Porcelain White

Note: The above are standard colors and other colors can be customized



Single leaf swing door



Center opening door



Unequal double door

Note: The above are standard colors and other colors can be customized

DOOR OPENING TYPE



LANDING HUMAN INTERFACE

Multiple options for personalized call buttons



HOP - A08
(standard)



HOP - A15
(Optional)



HOP - A09
(Optional)



HOP - A13
(Optional)

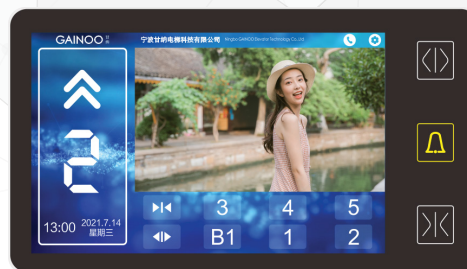


HOP - A10
(Optional)

INTELLIGENT CAR INTERFACE



Intelligent touch screen
COP - A05
(Optional)



Intelligent touch screen
COP - A09
(Optional)



Integrated COP with
touch buttons
COP - A10
(Standard)

INTERIOR STYLE



Touch button COP + Rock slab
JB - 01
(Optional)



Touch screen COP + Rock slab
JB - 02
(Optional)



Wood veneer + Aluminium
frame + Touch screen COP
JB - 03
(Optional)



Artistic Glass + Aluminium frame
+ Horizontal buttons COP
JB - 04
(Optional)

FLOOR STYLES



Rock board series



DB - A01



DB - A02

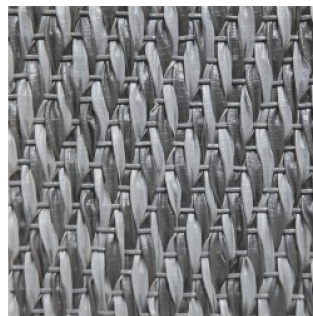


DB - A03

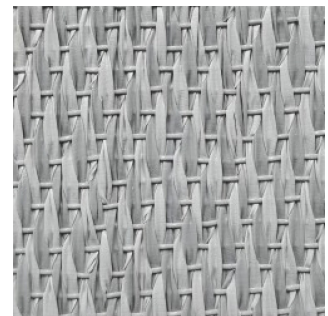
Woven floor series



DB - B01
(Standard)

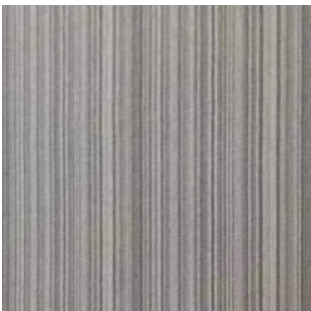


DB - B02
(Standard)

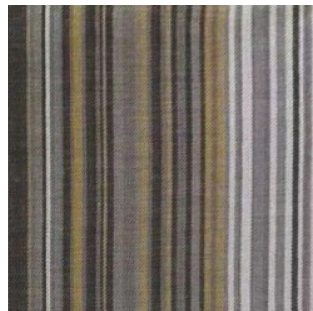


DB - B03
(Standard)

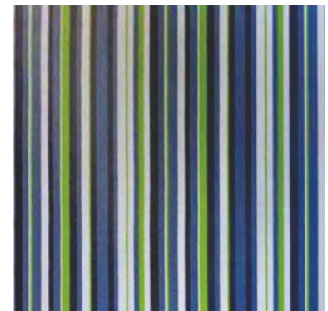
Color floor series



DB - D01

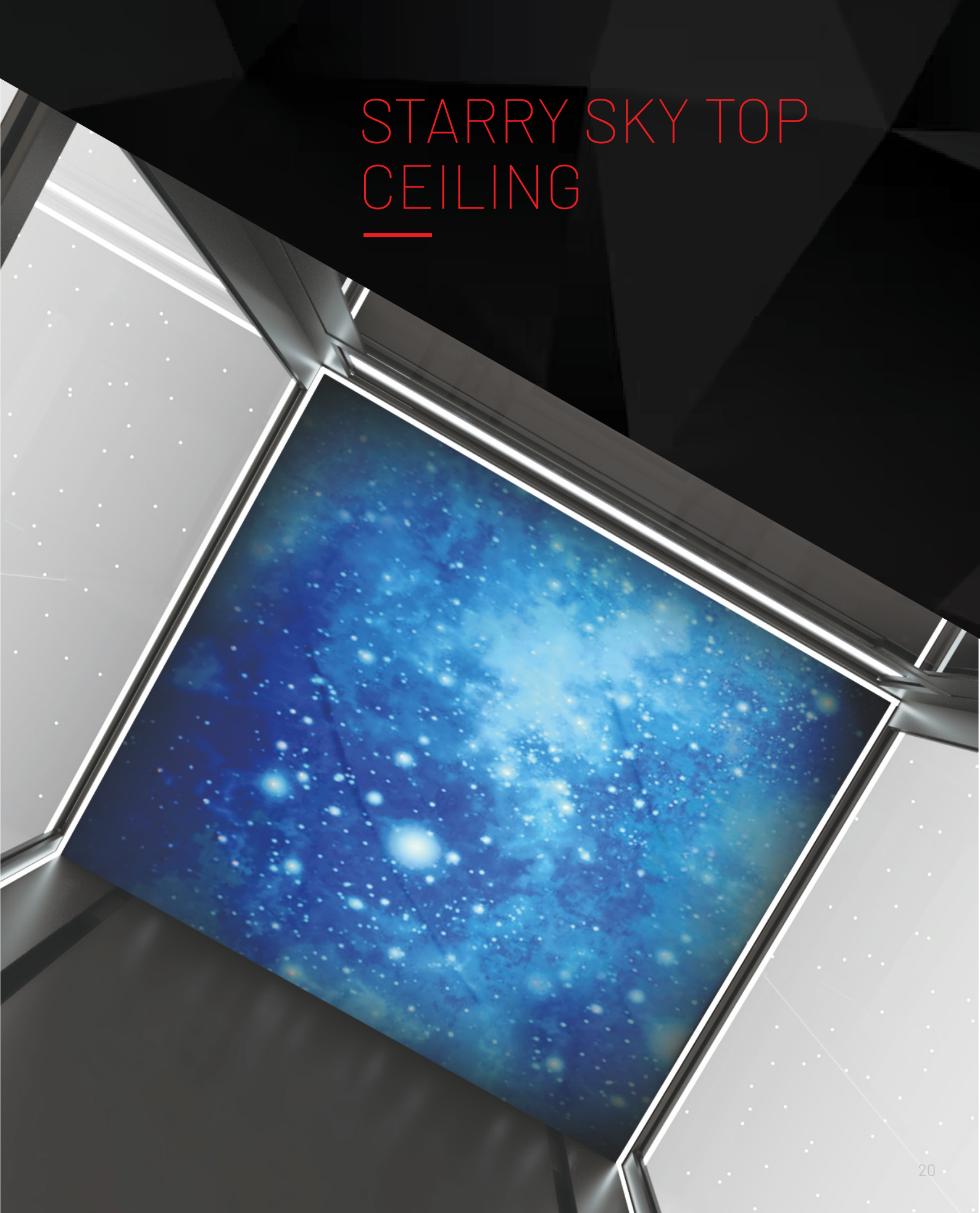


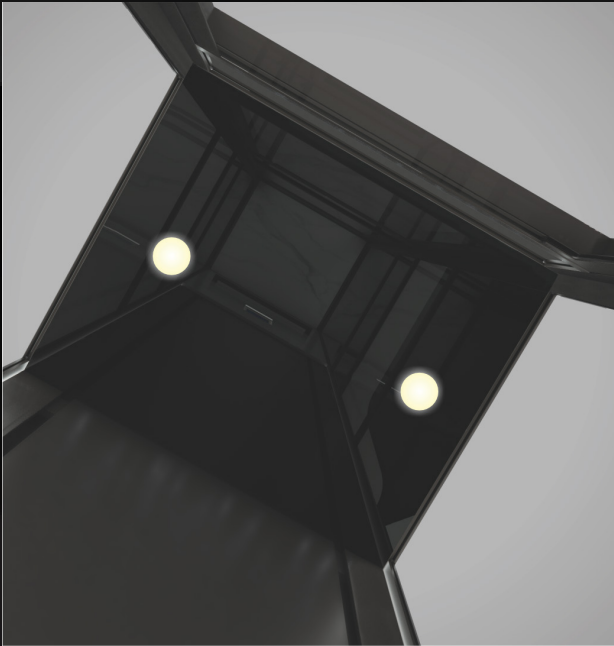
DB - D02



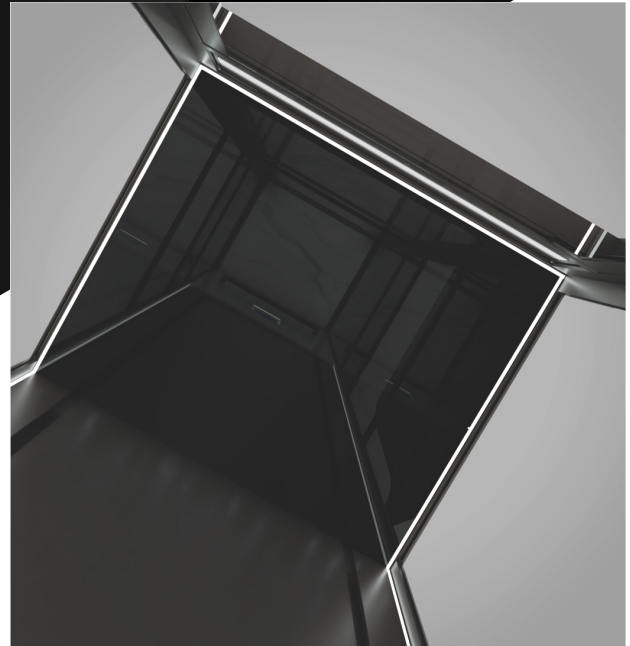
DB - D03

STARRY SKY TOP CEILING





Black acrylic plate + spotlight
(Standard)
JD - 01



Black acrylic plate + surrounding line lights
(Optional)
JD - 02

AMBIENT LIGHT OPTION

BLUE
DT-01



WHITE
DT-02



RAINBOW
DT-03

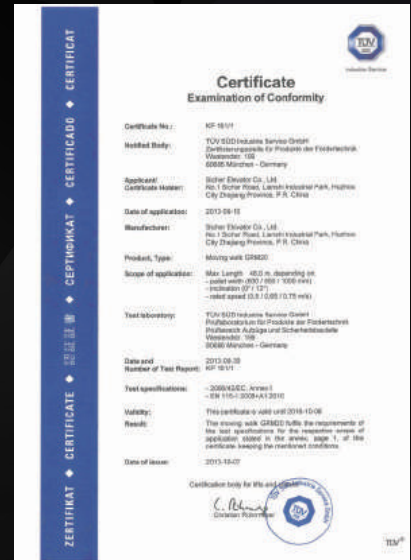
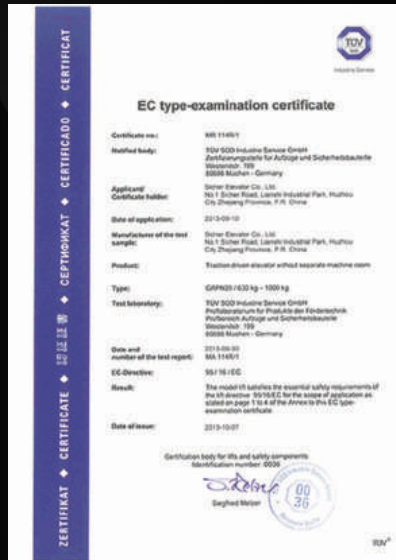
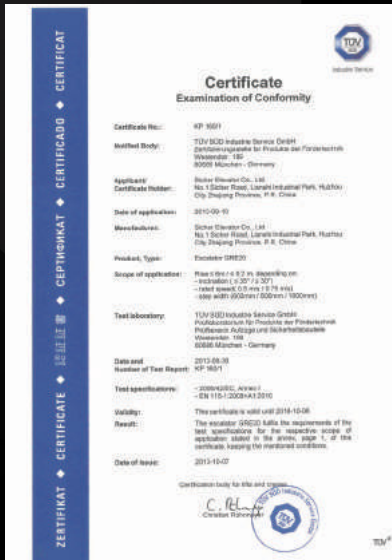




SRH AUFZUGE GMBH

SRH Aufzüge GmbH is an integrated multinational enterprise which develops, researches & manufactures elevators, control systems & other core components as well as parking system.





24/7

24x7 Service*

180
MINUTES

180 Mins Guaranteed
Service Response*



Safe



Performance
with Style



Feature
Loaded

TEKNIX ELEVATORS PVT. LTD. (INDIA)

Head office

#125, Gala Square, 4th Floor R.V Road,
VV Puram, Near Lalbagh Westgate, Bangalore – 560004
Ph : 080- 41253500/ 41483500 / 9148788011 | Toll Free : 1800- 1200-903

Manufacturing Unit

No.15/132/98/B Survey no. 1/4 , Kolar,
Off Mysore road, Near Big Banyan Tree
Tavrekere Hobli, Bangalore 560060 | Ph : +91- 9071211445

Hyderabad

#30, Indus Space Centre, 3rd Floor 100 Feet Road,
Kavuri Hills, Madhapur Main Road,
Hyderabad- 500081
76249 16882

Chennai

Old#29, New #62, 3rd Floor, 3rd Street,
Abhiramapuram,
Chennai- 600018
78997 23060

Coimbatore

7,3, Sambandam Road E,
R S Puram, Coimbatore,
Tamil Nadu- 641002
78997 23060

Visakhapatnam

Contact No: 63602 87035

Belgaum

Contact No: 63602 87258

Mangalore

Contact No: 84319 09748

INTERNATIONAL BRANCHES

Nepal

Elevator Solutions Nepal Pvt Ltd.(TEKNIX)
Nagapokhari, Kathamandu, Nepal.
+977 1 4433280 | Mob : +977-98020 80880
Email : info@elevatorolutionsnepal.com.np

Maldives

Vertical Solutions Pvt Ltd
M. Hazaarumaage, Fareedheemagu, 20191
Male, Maldives | Ph : 3343833

UAE - United Arab Emirates

Teknix Prime Lifts Trading Co. LLC
Office no. F29, Al Khaima Bldg, 2 Al Barsha, Dubai- UAE
sales.dxb@teknixelevators.com | +971-56 981 8705

* 24x7 service is provided for emergency evacuations only. Breakdown services would be provided in regular working hours of regular working days.

*180 mins guaranteed service response is the response time from the time of lodging the complaint on toll free number and it is the time required for the representative to reach the place of installation. 180 mins guaranteed service would be considered only in case the complain is lodged within the working hours of working days.